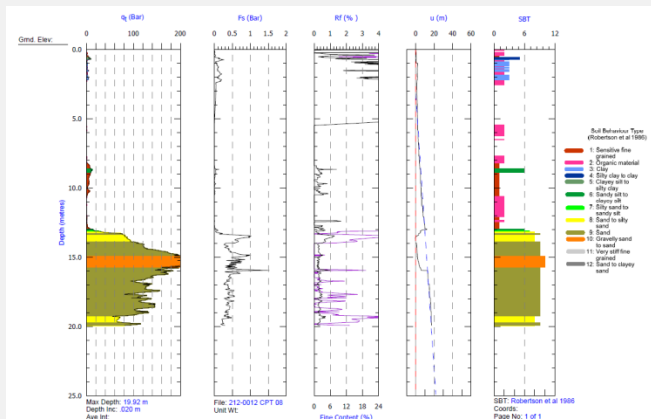


## Cone Penetration Testing Capabilities



The Cone Penetration Test (CPT) has been used for over 40 years and is one of the most common and economical methods in characterizing soft soil.

HE Testing is pleased to announce, that it has acquired two of the latest digital cones from AP van den berg. With digital cone technology, resistive interference will be minimized, resulting in a cleaner and more accurate reading.



Sample Data Set

Our latest digital cones are capable of up to 10 tons with the precision of a Class 1 cone for depths up to 40 meters. With Class 1 cones, we have the sensitivity of a lower capacity cone while maintaining a large tip resistance range.

When seismic data is needed to determine shear modulus (G), elastic modulus (E), and Poisson's ratio; our cones can be easily adapted to provide this information.

### Cone Specifications

Accordance with precision Class 1 of NEN 5140 / EN ISO 22 specifications.

Parameters	Max (MPa)	Precision Class 1 (MPa)
Tip resistance ( $q_c$ )	150	0.035
Sleeve friction ( $f_s$ )	1.5	0.005
Pore water pressure (U)	3	0.01
Vertical Inclination (I)	25°	2°
Depth		0.1

### Seismic Module

Parameters	Specifications
Resolution	16 bit
Sample Frequency	5000 Hz
Sample Time	600 ms
Accelerometer	1 Hz - 100 Hz
Components	3

Other Services Also Available:

#### Soil Testing

- Wildcat Penetration Testing
- Field Compaction Testing/Nuclear Densometer (ASTM D2922 & D3071)
- Proctor (ASTM D698, D1557, D4718)
- Atterberg Limits Testing (ASTM D4318)
- Sieve Analysis
- Moisture Contents Testing

#### Monitoring

- Vibration Monitoring
- Ground Profiling
- Settlement Monitoring
- Structure Monitoring